



Science

Plants



WHAT'S INSIDE A SEED?



Meet Quizby!

Can you spot me in the
Lesson Presentation?

The questions that appear will help you to think about the key learning throughout the lesson.



Aim

- To look closely at the parts of a seed that will grow into a plant and explain how it will germinate.

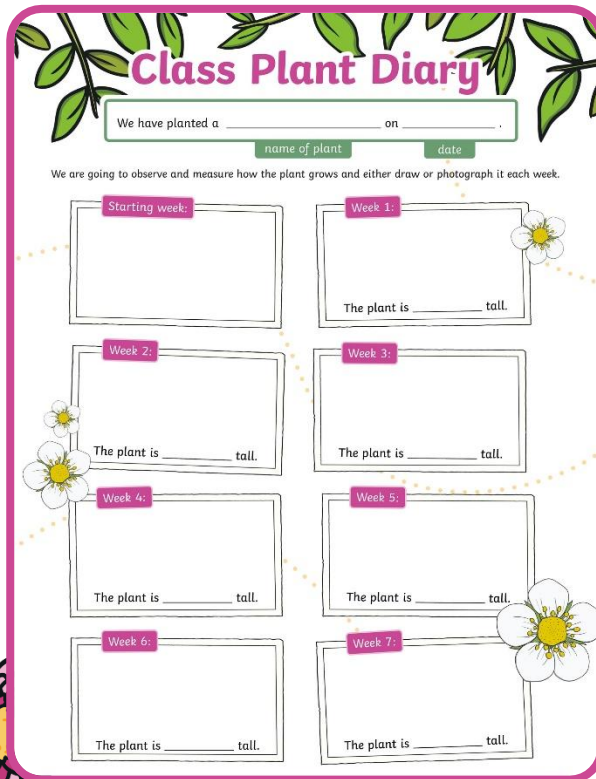
Success Criteria

- I can identify the parts of a seed that will grow into a plant.
- I can explain what a seed needs to begin to grow.
- I can explain what 'germination' means.



Remember It

Let's look at our class plant and see how it is growing. We can measure its growth and draw or photograph it for our **Class Plant Diary** from Lesson 1!



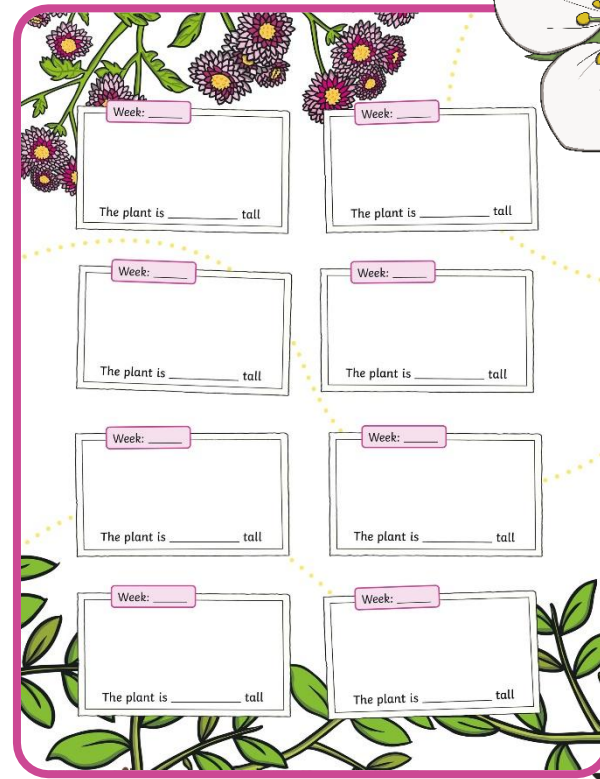
Class Plant Diary

We have planted a _____ on _____.

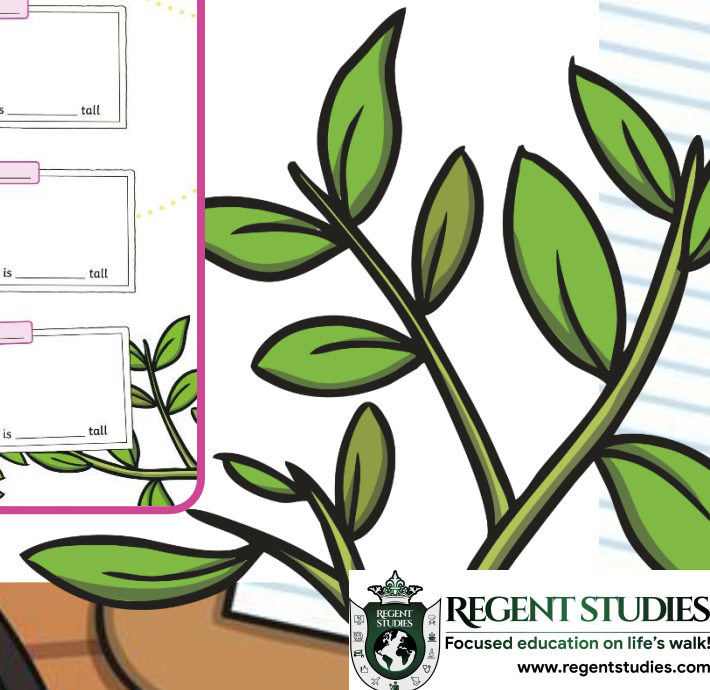
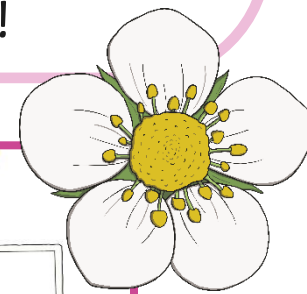
name of plant date

We are going to observe and measure how the plant grows and either draw or photograph it each week.

Starting week: The plant is _____ tall.	Week 1: The plant is _____ tall.
Week 2: The plant is _____ tall.	Week 3: The plant is _____ tall.
Week 4: The plant is _____ tall.	Week 5: The plant is _____ tall.
Week 6: The plant is _____ tall.	Week 7: The plant is _____ tall.

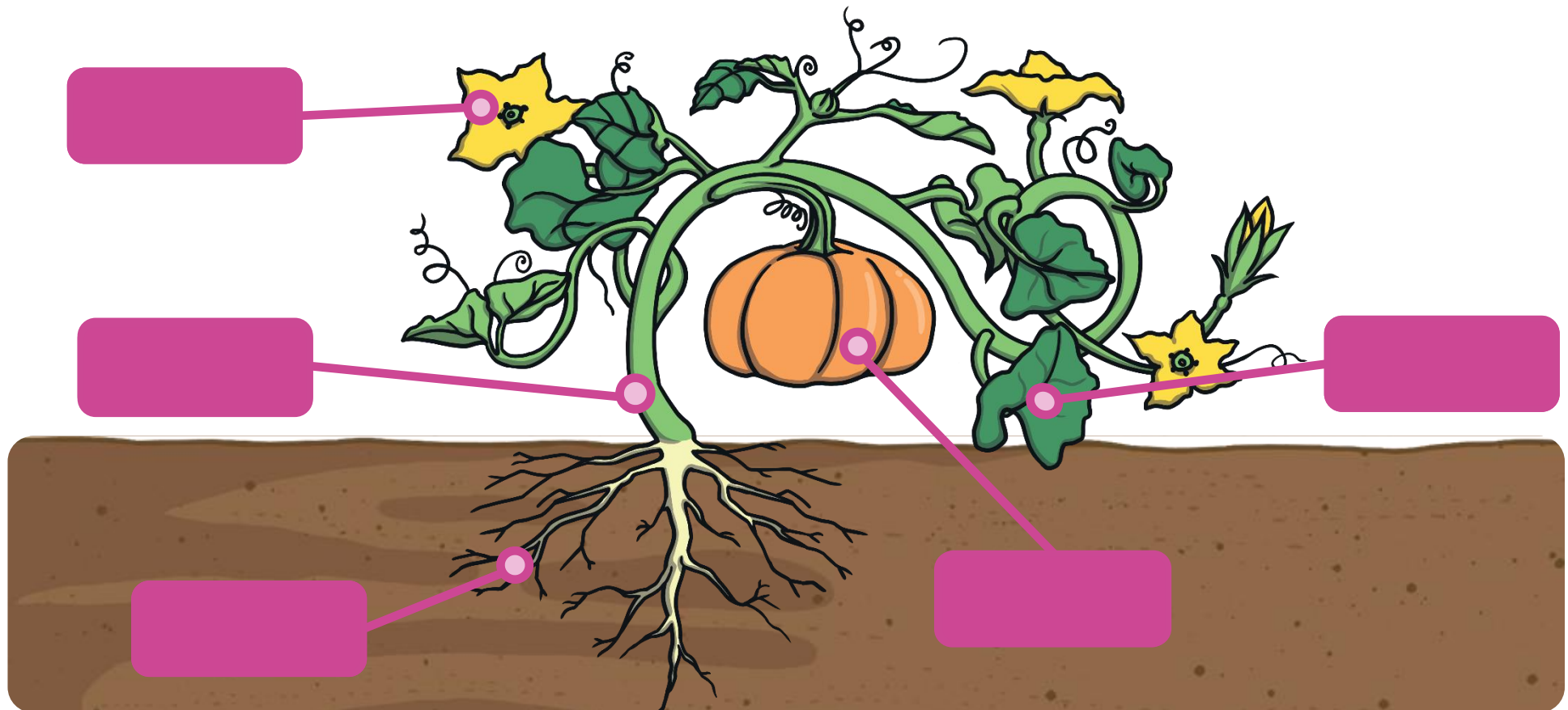


Week: The plant is _____ tall.	Week: The plant is _____ tall.
Week: The plant is _____ tall.	Week: The plant is _____ tall.
Week: The plant is _____ tall.	Week: The plant is _____ tall.
Week: The plant is _____ tall.	Week: The plant is _____ tall.



Remember It

Can you name each part of this plant with your partner?
Do we know what any of the parts are important for?



Growing, Growing, Grown

Let's learn more about **plants** from the **Growing, Growing, Grown eBook**.



Let's read up
to the end of
page 10
together.



Seeds

We have learnt that plants make new plants using their **seeds** or **bulbs**.

Look carefully at the **seeds**.
What do you think might be inside them? Explain why.



flax seeds



pumpkin seeds



sunflower seeds

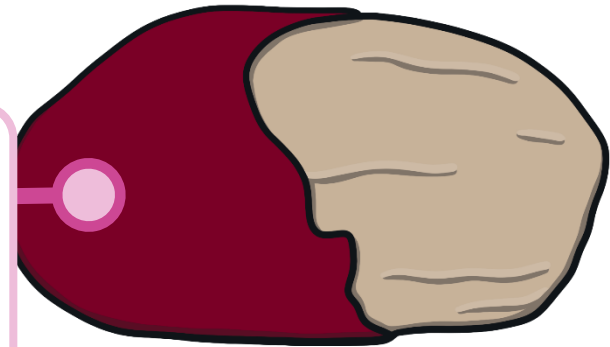
What's Inside a Seed?

Inside the seed is everything the baby plant needs to start growing!

Each seed has a s **Germination**

coat is
of the
being a
well

This is when a plant starts to grow from its seed, as a tiny **shoot** bursts out and begins to grow bigger. This happens when the **conditions** are right (the plant has everything it needs).



What's Inside a Seed?

This is what coffee beans look like when they have started to **germinate**.

What can you see? What do you notice about the seed (the coffee bean)?



to grow
bean
ground.

thing
n.

What's Inside a Seed?

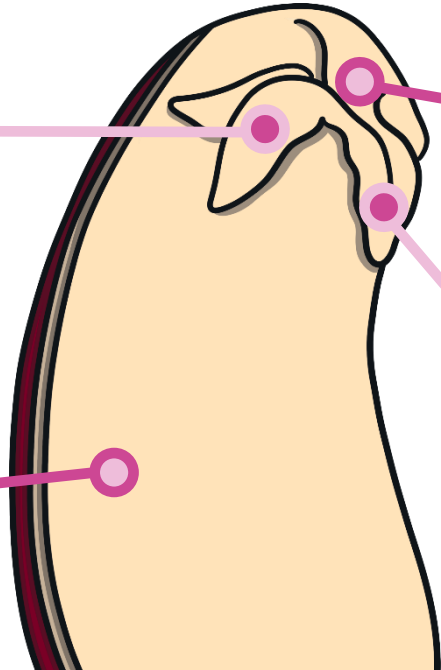
The inside of a seed looks like this:

This part will grow into the stem and leaves.

baby plant

food store

This part will grow into the roots.



Which part do you think will grow into the leaves?
Which part do you think will grow into the roots?

x food like a fully help it to grow!



Dissecting a Seed

Today, we are
we will open

How to **dissect** a seed

The seeds need
to be soft, so
they have
been soaked in

Very gently, put the seed between your
finger and thumb and gently rub the
seed. The two halves should come apart.

Gently drag your thumbnail along the

Use your magnifying glass to look at the
inside of the seed. Can you see the baby plant?



Can you tell which part will grow into the roots
and which will grow into the stem and leaves?

What, then the seed.
them?



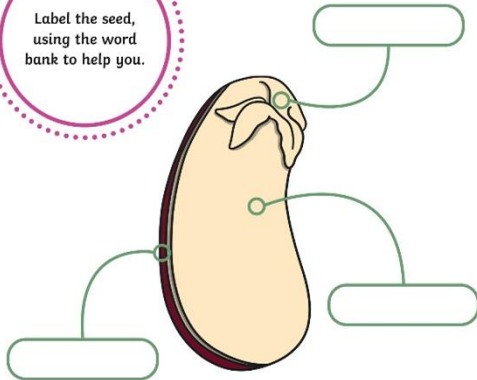
Inside a Seed

Complete the **Inside a Seed Activity Sheet**

Inside a Seed

To look closely at the parts of a seed that will grow into a plant and explain how it will germinate.

Label the seed, using the word bank to help you.



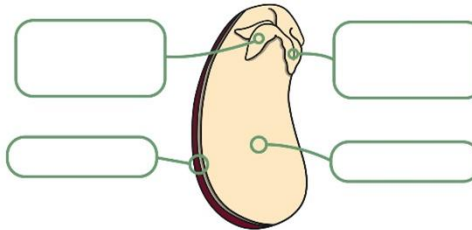
Word Bank

seed coat baby plant food store

Inside a Seed

To look closely at the parts of a seed that will grow into a plant and explain how it will germinate.

Label the seed, using the word bank to help you.



Can you explain what each part of the seed does?

The seed coat _____

The food store _____

The baby plant _____

Word Bank

seed coat will grow into stem and leaves will grow into roots food store

Inside a Seed

To look closely at the parts of a seed that will grow into a plant and explain how it will germinate.

Draw a diagram of the inside of a seed and label it to show the different parts, using the word bank to help you.



Word Bank

seed coat will grow into stem and leaves will grow into roots food store

Can you explain what each part of the seed does?

How Do Seeds Grow?



M
the
sunl

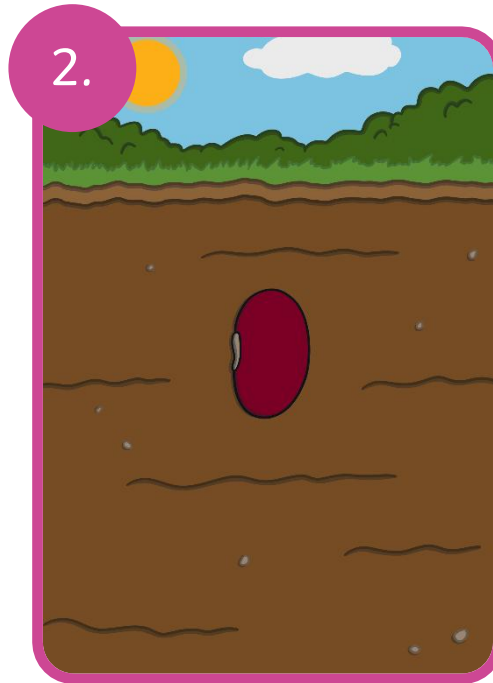
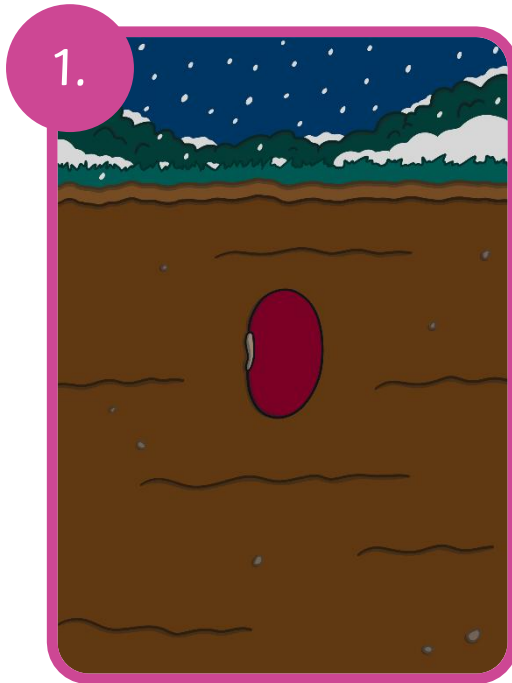
To **germinate**, seeds need water and the right temperature. Some seeds need more warmth and water than others do.

ve
ut
ger.



How Do Seeds Grow?

Which of these seeds do you think will **germinate**?
Explain why.



Think about the seeds we planted in the last lesson.

Which ones do you think will **germinate**? Why?
Which ones do you think won't? Why?

Aim



- To look closely at the parts of a seed that will grow into a plant and explain how it will germinate.

Success Criteria

- I can identify the parts of a seed that will grow into a plant.
- I can explain what a seed needs to begin to grow.
- I can explain what 'germination' means.



